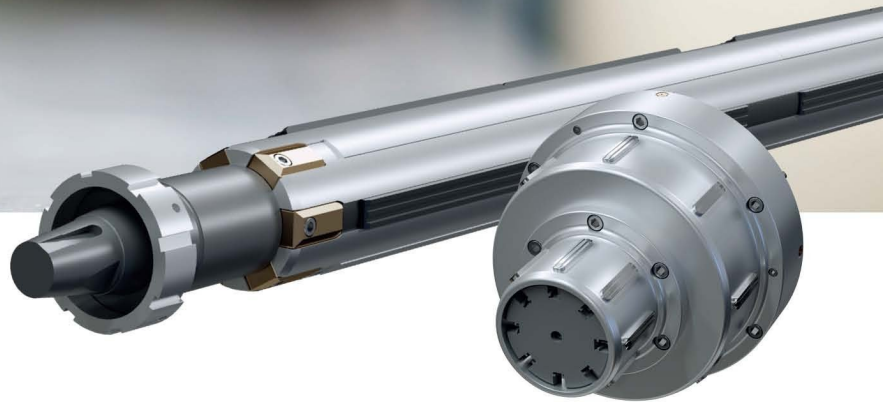
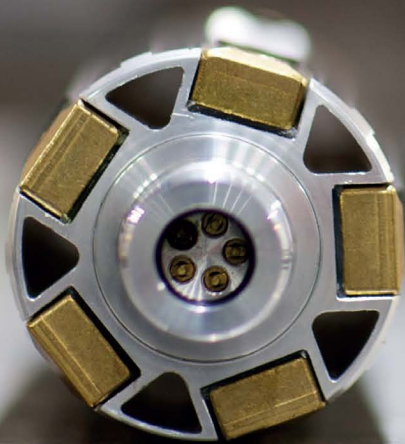


# CORE SHAFTS & CHUCKS

MADE IN SWEDEN



Balbus (UK) Limited  
Grove House  
Lutyens Close  
Basingstoke,  
Hampshire,  
RG24 8AG

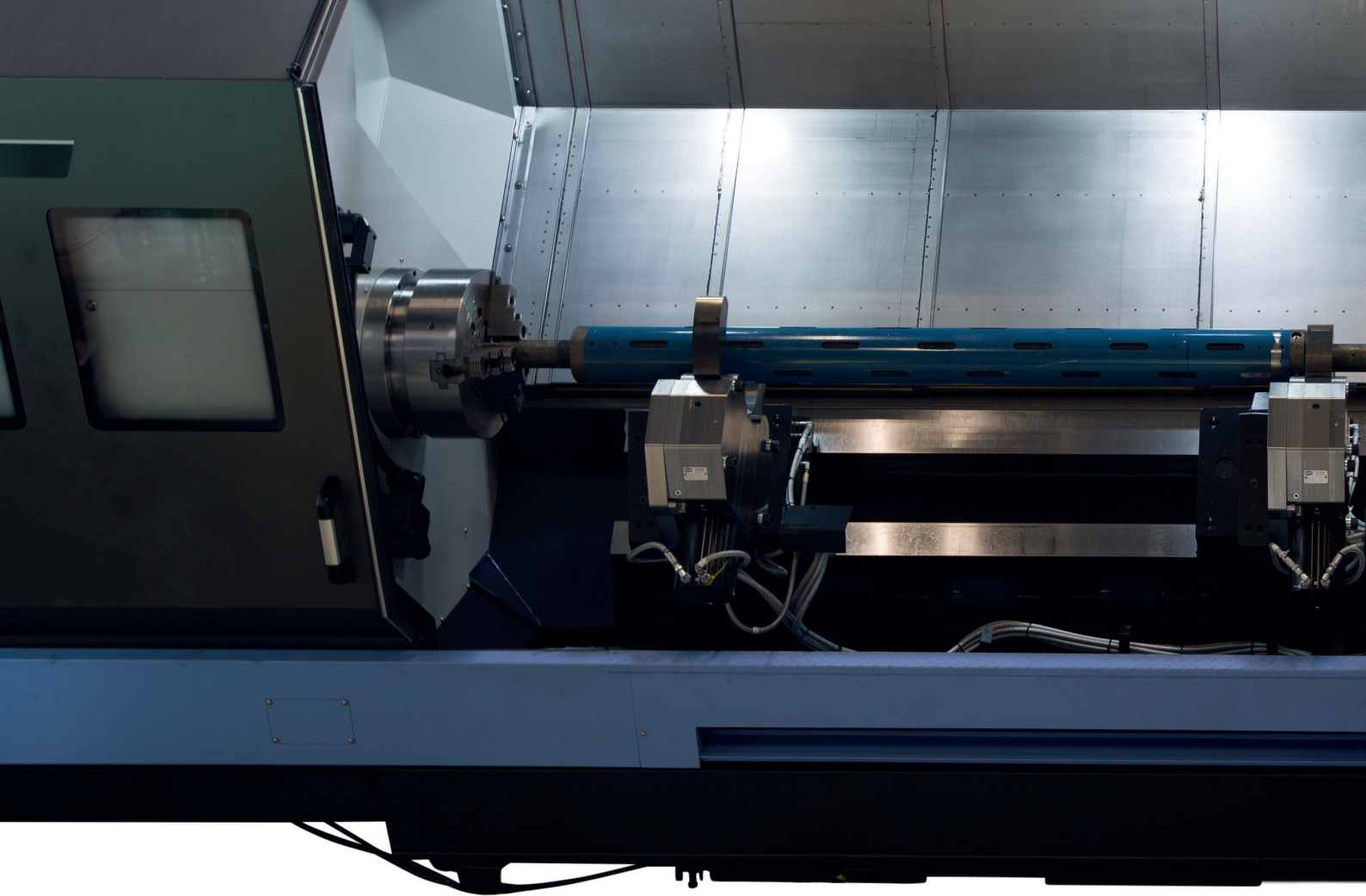
Tel: 01256 819 667  
Mobile: 07882 729795 / 07412 352925  
Email: [enquiries@balbus-uk.com](mailto:enquiries@balbus-uk.com)

<http://www.balbus-uk.com>



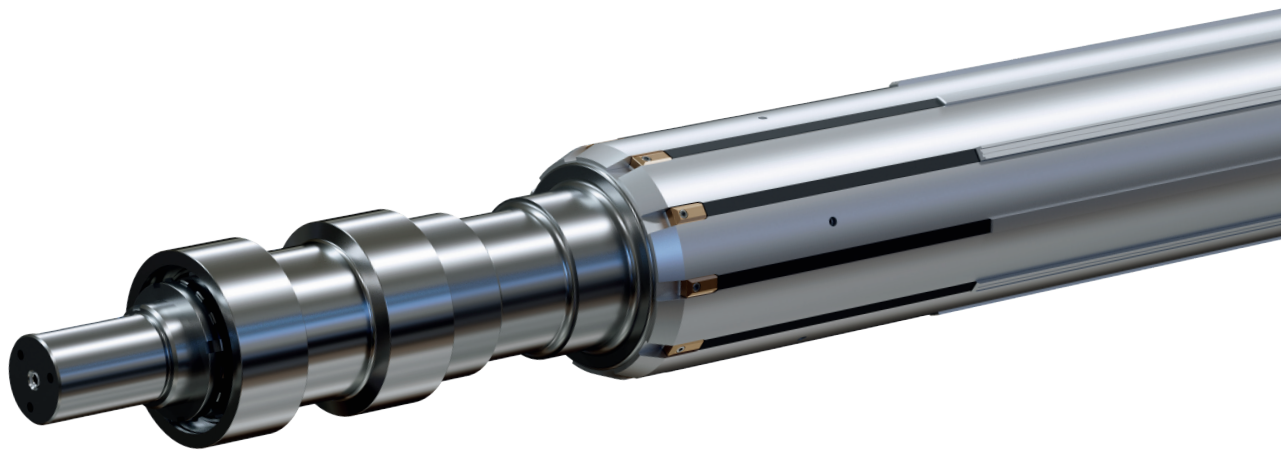
## HOFPARTNER AB

AMAL-SHAFT®  schlumpf

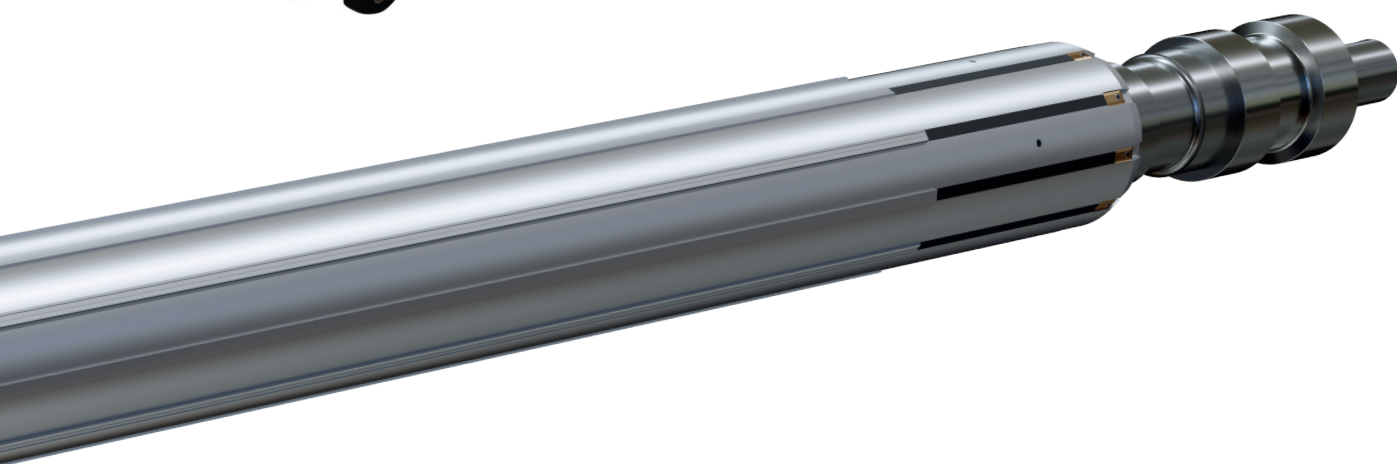


# Think BIG

In our workshop we are able to manufacture core shafts up to 7 meters length and 600 mm in diameter.









# Innovation through tradition

We invented the original core shaft in the fifties and have fostered this legacy since. Together with our customers we create unique solutions, so that they are able to grow and become leaders within their respective fields. Leading the development forward is our main driving force.

## **We help you become world leading**

Through a helicopter view we analyze the customers process.

When others say “we think out of the box”, we simply ask: what box?

With our solutions, the customer enjoys increased productivity and margins.

## **You win in the long run**

Our shafts are more durable and perform better because we always think one step ahead.

Through careful calculations and through choice of materials, we optimize our products for each unique application. We put great effort into finding the best solution for your specific process.

## **Our knowledge - your success**

Our staff is our most valuable asset. The accumulated experience in the field of core shafts and chucks stretches well over a century. Experience means safety. Rethinking puts us ahead. This combination makes us a partner to grow together with.



# Core Shafts

Our product range includes a variety of profiles which we customize to your specific application.

If the solution you need doesn't exist, we'll make it.





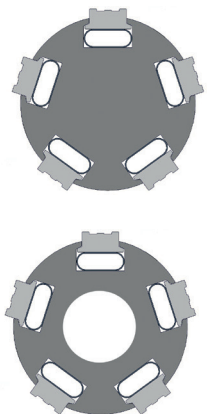
## AMAL-SHAFT® RANGE

**HEAVY  
DUTY**



### S&T - Solid or Tube section, milled grooves

- Very strong
- Minimum deflection
- For core diameter: Ø18mm to Ø600mm
- Groove widths 9, 16, 20 and 33 mm
- Number of grooves varies according to application





## TPPC & TPKC - Thin Profile P/K Centring

- Carbon fibre reinforced aluminium profile
- Light and strong
- Durable
- For cores: Ø70mm and Ø76mm (3")
- Groove width 20 mm  
(P=high stiffness,  
K=standard stiffness)



## TPC - Thin Profile Centring

- Ultra light weight aluminium profile
- Weight optimized profile
- For cores: Ø70mm and Ø76mm (3")
- Groove width 20 mm



## PC - Profile Centring

- Solid aluminium profile
- Very cost effective
- For cores: Ø70mm and Ø76mm (3")
- Groove width 20 mm

## PTC 150 - Profile Tube Centring

- Light weight
- Available as ultra light weight (middle)
- Optimized profile
- For cores: Ø150mm and Ø152,4mm (6")
- Centring ledges adaptable for Ø148,5 - Ø153mm
- Groove width 20 mm



## AMAL-SHAFT® VARIATIONS

### Multi Body

- Extended Life Bearing (XLB) is standard
- Easy maintenance
- Active centring as option

### Shafts for lifting reels

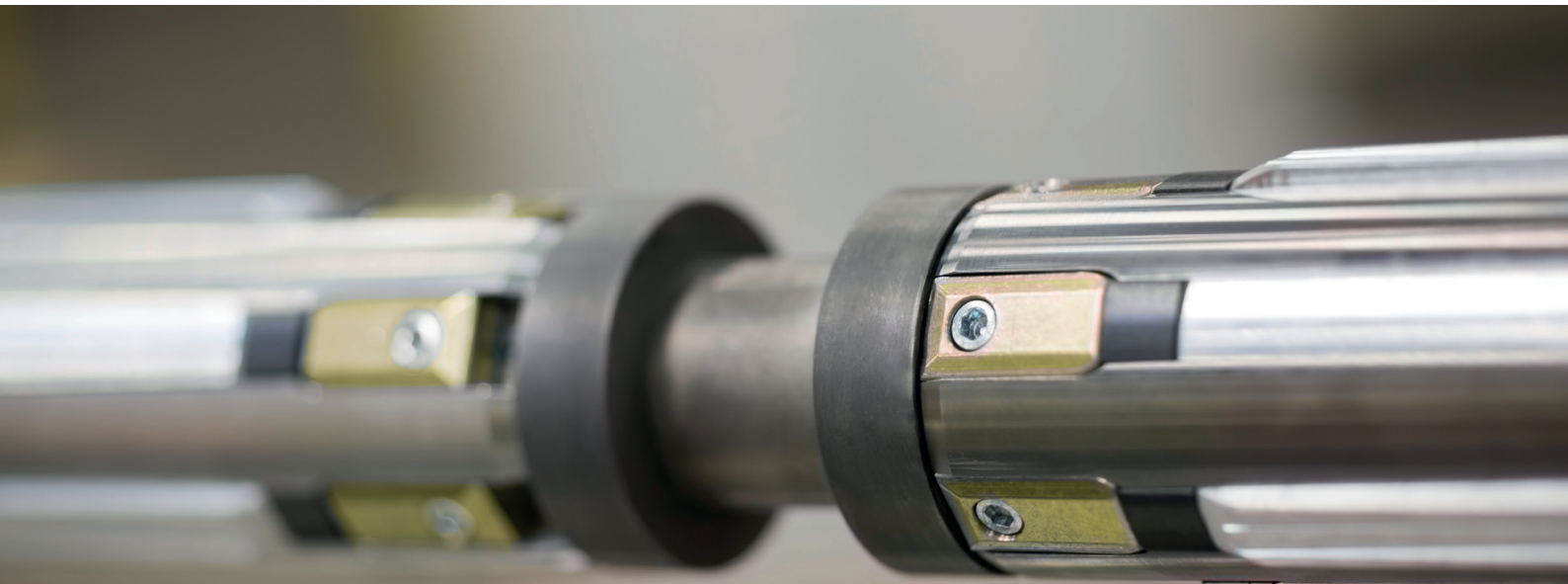
- Pneumatically activated
- Safety expansion as option
- Rubber slats or sawtooth slats

### Friction shafts

On demand







## Extended Life Bearing - XLB

*"We implemented the XLB and doubled our production"*

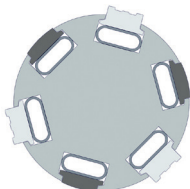
Customer testimonial

Extended Life Bearing - XLB. Standard on Hofpartners Multi Body-applications.

Maximum production with minimum maintenance. Doubles the production and increases the life span of the bearing tenfold.

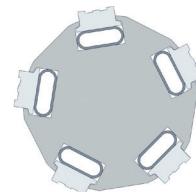
### Active centring

- Perfect centring
- Expanding elements center the core



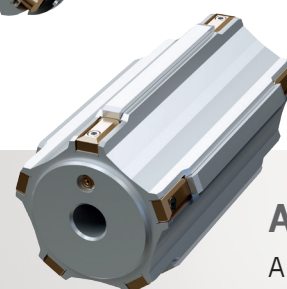
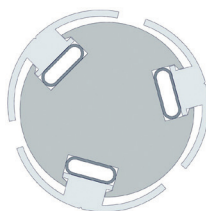
### Passive centring

- Polygonal body machined to center the core
- Body shape makes inserting shaft easy, despite tight play



### Shell-Shaft

- Standard profiles for  $\varnothing$  38/50/70/76/100 mm
- Available in other dimensions on demand



### Slat options

- Aluminium, rubber and plastic
- Cross rilled
- Whole length or divided (multi)
- Shell type (for coreless winding)

### Adapters

All dimensions available



## SCHLUMPF RANGE

### CTA

- Heavy duty
- Standard dimensions: Ø70mm, Ø76mm (3") and Ø150mm (6")
- Other dimensions on demand
- Lugs: Rubber or Steel
- Carbon fibre body optional



### CTA/S

- Active centring
- Heavy duty
- Standard dimensions: Ø70mm, Ø76mm (3") and Ø150mm (6")
- Other dimensions on demand
- Lugs: Rubber or Steel
- Carbon fibre body optional

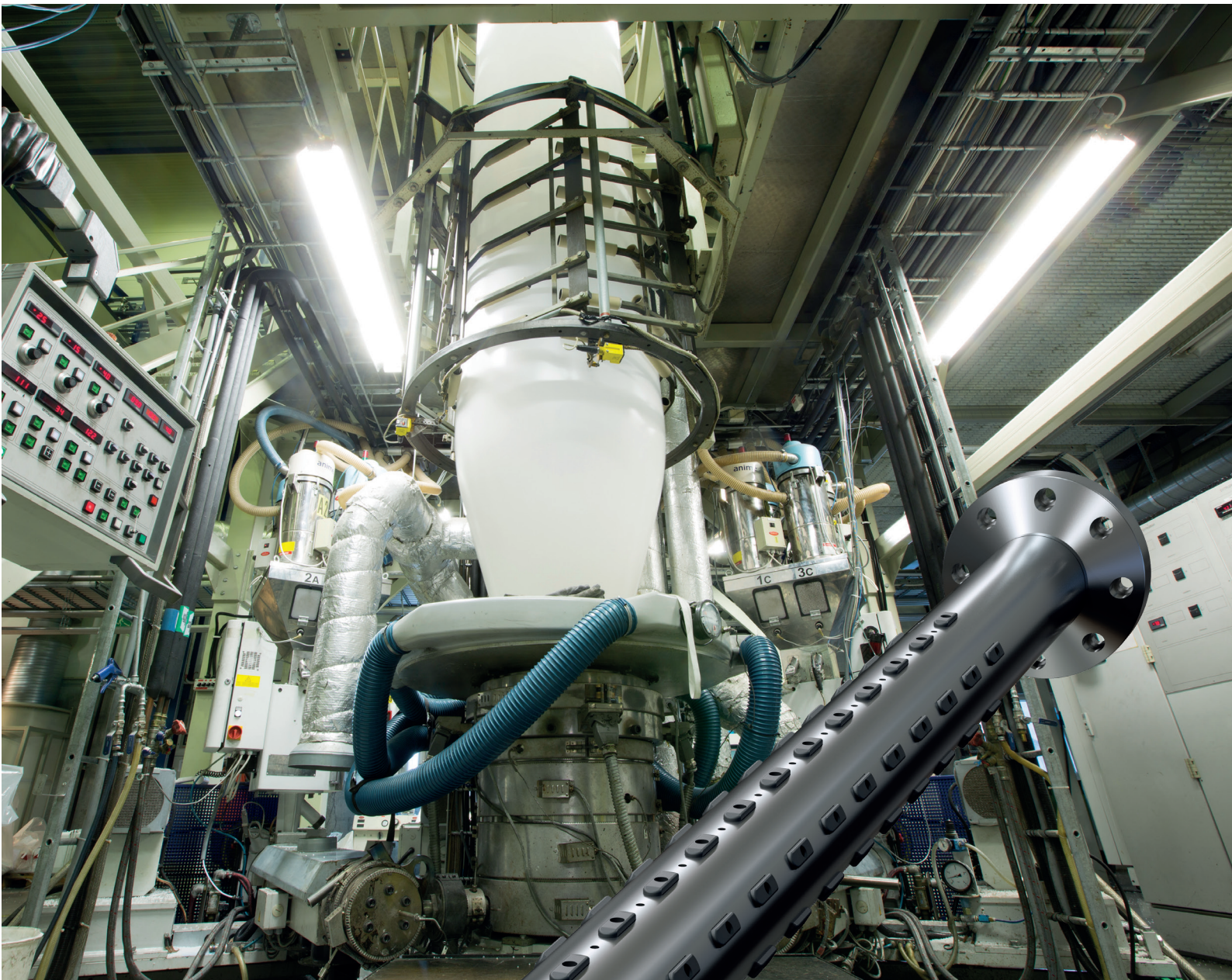
### CTL

- Cost effective
- For core: Ø70mm, Ø76mm (3")
- Lugs: Polyamid or Polyurethane
- Carbon fibre body optional



**CTL Carbon fibre edition**





### SF - mechanical centring

- Perfect centring
- Pneumatic or mechanical expansion
- Heavy duty
- Any dimension on demand
- Lugs: rubber, polyurethane, aluminium & steel

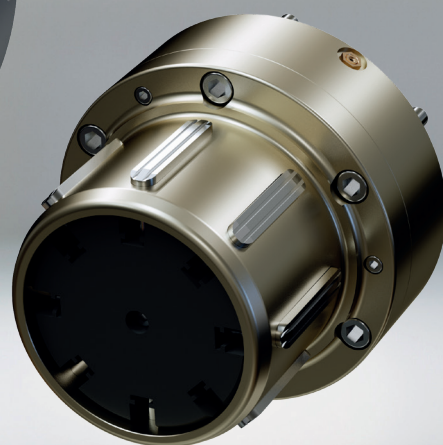
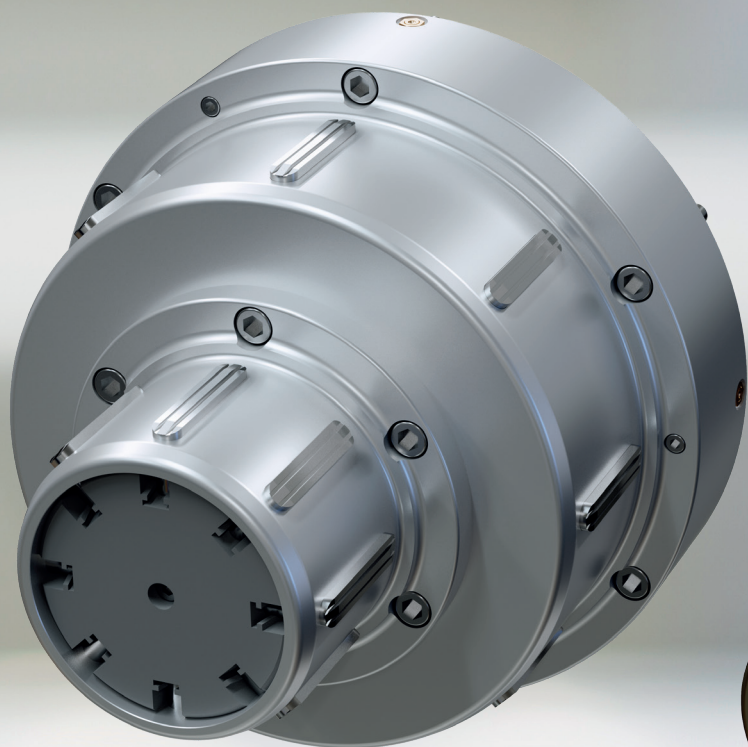


# Chucks

Designed for longer life and  
minimum maintenance







## ACAM AMAL-CHUCK Air Mechanical

- Perfect centering
- Expanded via rotary coupling or air gun
- Very durable polymeric core
- High torque
- Available as multi diameter chuck
- Minimum maintenance
- Other dimensions available on demand

### ACAM 70-5

- Max load: 1400 kg/pair
- Max torque: 400 Nm/chuck
- Expansion: 68-78mm

### ACAM 76-5

- Max load: 1600 kg/pair
- Max torque: 450 Nm/chuck
- Expansion: 74-84mm

### ACAM 100-6

- Max load: 3000 kg/pair
- Max torque: 600 Nm/chuck
- Expansion: 98-108mm

•

### ACAM 150-8

- Max load: 3000 kg/pair
- Max torque: 900 Nm/chuck
- Expansion: 148-158mm

# Spare parts & options

Please contact us with your needs. We have spare parts in stock for all AMAL-SHAFT® core shafts, Schlumpf core shafts and AMAL-CHUCKS.

Spare parts lists can be found on [www.amal-shaft.com](http://www.amal-shaft.com)





## Full Range Supplier

We also supply core shaft handling,  
reel turners, safety chucks, brakes  
and more.

Ask us - we cover most







## HOFPARTNER AB

AMAL-SHAFT®  schlumpf

**Balbus (UK) Limited**  
Grove House  
Lutyens Close  
Basingstoke,  
Hampshire,  
RG24 8AG

**Tel: 01256 819 667**  
**Mobile: 07882 729795 / 07412 352925**  
**Email: [enquiries@balbus-uk.com](mailto:enquiries@balbus-uk.com)**

**<http://www.balbus-uk.com>**